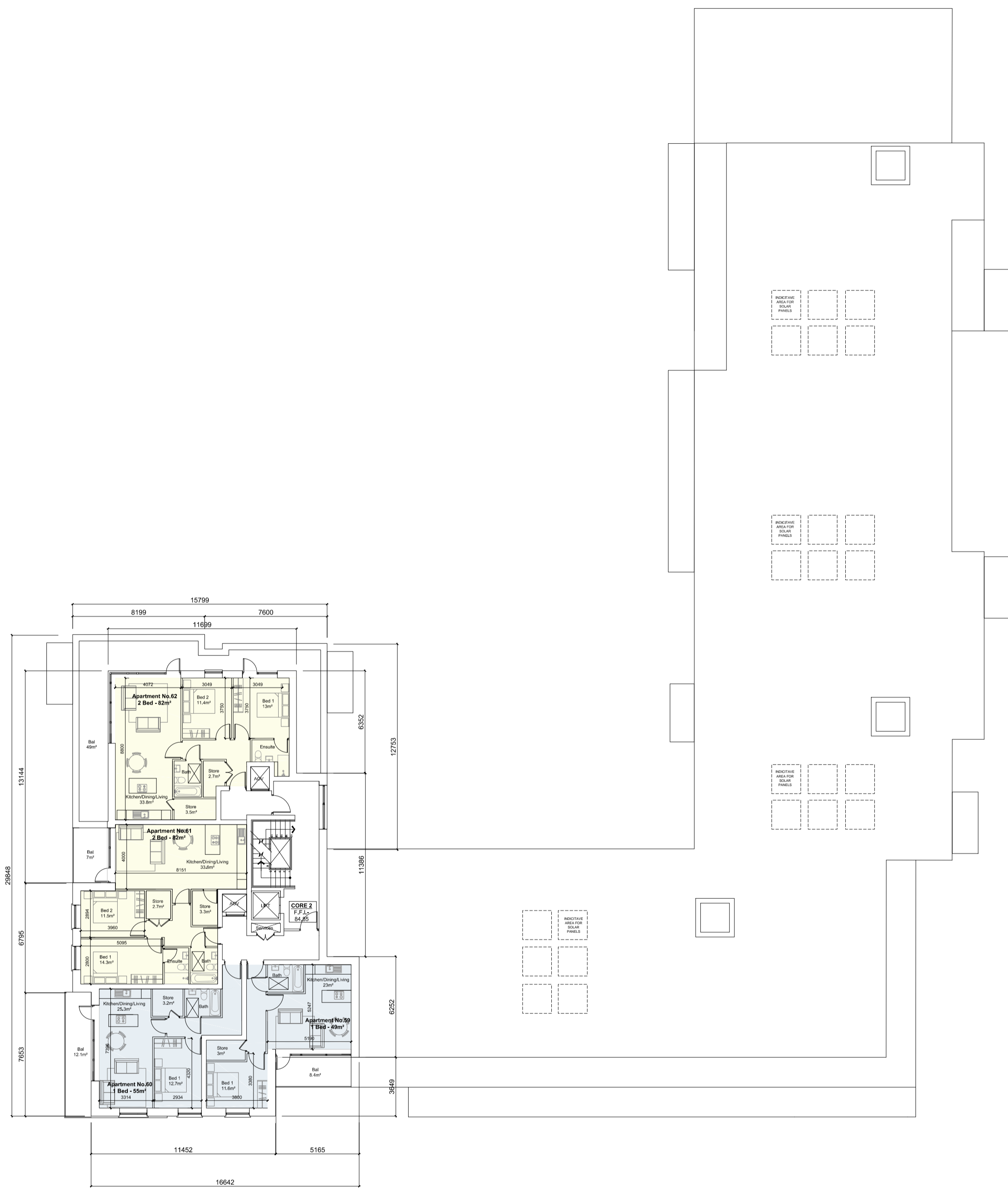
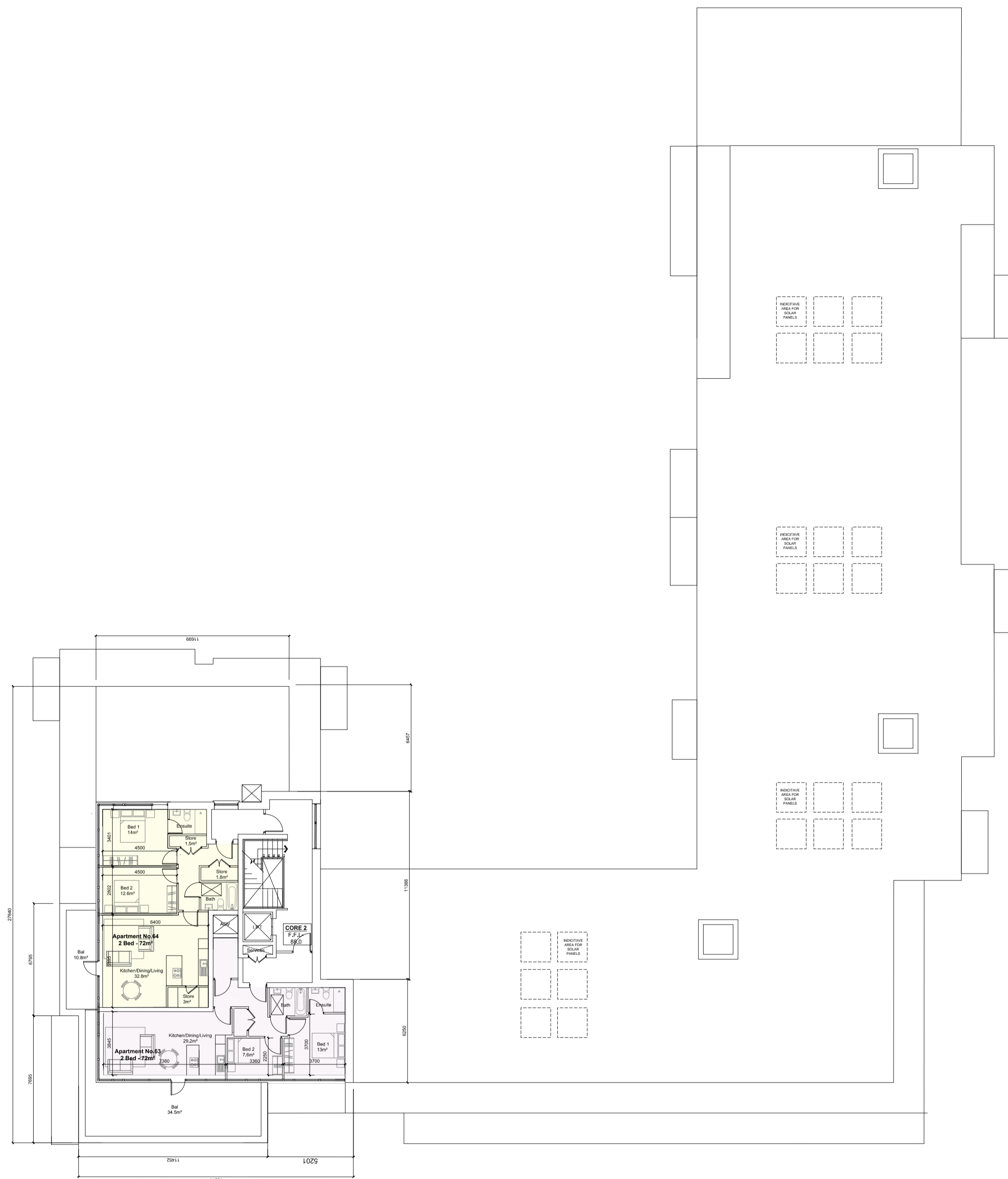


GENERAL NOTES

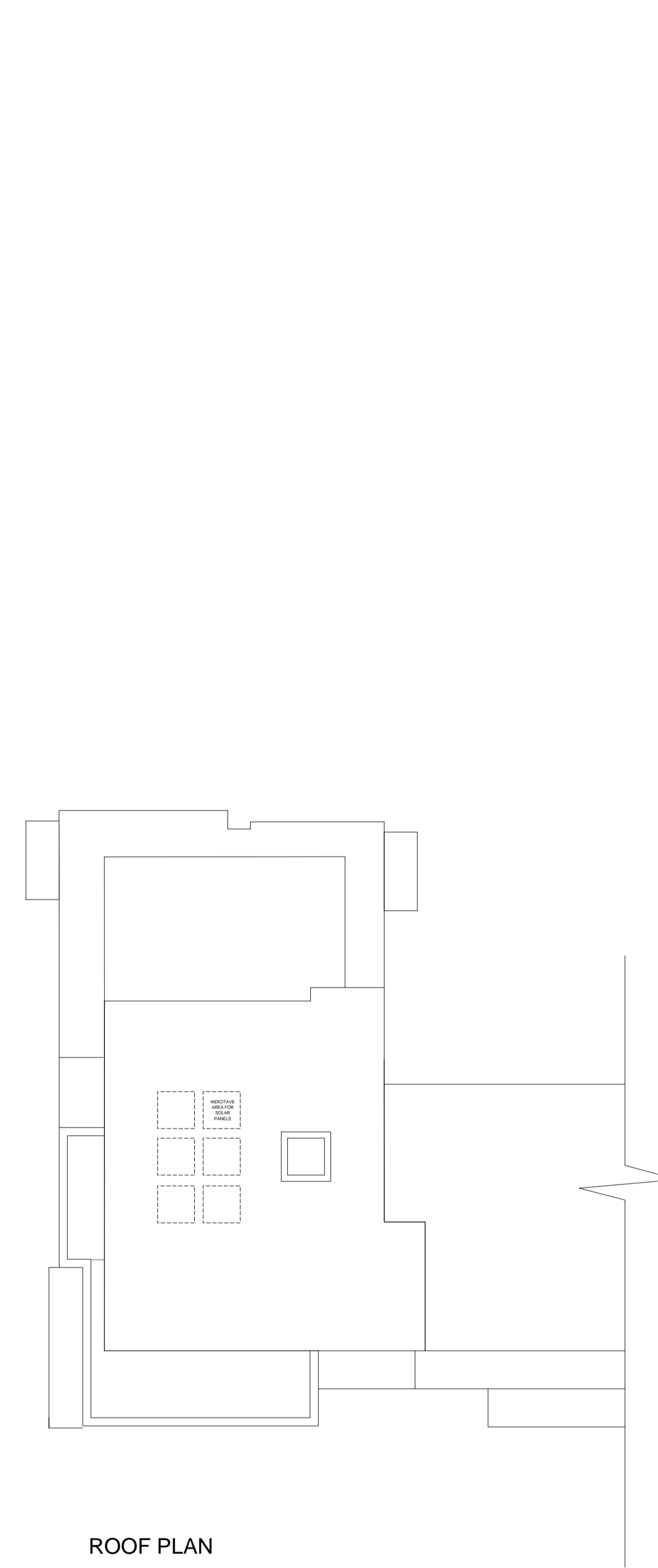
THIS DRAWING TO BE READ IN CONJUNCTION WITH ARCHITECT'S DRAWINGS, CONSULTANT ENGINEER'S DRAWINGS AND SPECIFICATIONS, CONSERVATION ARCHITECT'S REPORTS AND METHOD STATEMENT, AND LANDSCAPE ARCHITECT'S DRAWINGS AND SPECIFICATIONS.



6TH FLOOR



7TH FLOOR



ROOF PLAN

- 2 bed 4 person apartment
- 2 bed 3 person apartment
- 1 bed 2 person apartment

NOTES:

DO NOT SCALE FROM DRAWINGS. WORK TO FIGURED DIMENSIONS ONLY. ARCHITECT TO BE NOTIFIED OF ALL DISCREPANCIES.

REVISIONS

DATE	DESCRIPTION	No.

 <small>M: CROSSAN O'ROURKE MANNING ARCHITECTS</small>	PROJECT TITLE: WINDMILL SHD	DATE: Oct'19	DRAWN BY: SQ
	DRAWING TITLE: Block L&M Sixth, Seventh and Roof Plan	SCALE: 1:200@A1	REVISION:
<small>1 Grantham Street, Dublin 6, D06 A49Y, Ireland. Tel: 01-4787700 Fax: 01-4787711 E-Mail: sq@mcorm.com</small>		JOB NO: 18031	DRAWING NO: PL011